



BALI 60

Hebe-Schiebewand *Lift and Slide Doors*

| | |
|------------------------|----------------------------|
| Produkteinformation | <i>Product Information</i> |
| Technische Zeichnungen | <i>Technical Drawings</i> |
| Bestellformulare | <i>Order Forms</i> |

BALI 60



| System | System | A | | |
|------------------------------|-----------------------------------|---|----|-------|
| Deckenschiene 1-gleisig | Top rail 1-track | | 01 | |
| Bodenschiene 1-gleisig | Bottom rail 1-track | | 02 | |
| Deckenschiene 2-gleisig | Top rail 2-track | | 03 | |
| Bodenschiene 2-gleisig | Bottom rail 2-track | | 04 | |
| Deckenschiene 3-gleisig | Top rail 3-track | | 05 | |
| Bodenschiene 3-gleisig | Bottom rail 3-track | | 06 | |
| Wandanschluss 1-gleisig | Jamb 1-track | | 07 | |
| Wandanschluss 2-gleisig | Jamb 2-track | | 08 | |
| Wandanschluss 3-gleisig | Jamb 3-track | | 09 | |
| Flügelverbindung | Sash overlap | | 10 | |
| Mittelverbindung | Central connection | | 11 | |
| Flügelanschluss an Hausmauer | Wall connection profile | | 12 | |
| Maueranschluss 1-gleisig | Wall connection profile 1-track | | 13 | |
| Glasleisten und Glasdicken | Glazing beads and glass thickness | | 14 | |
| Bestellformular | Order form | | | BA_60 |



SUNPARADISE Est.

Bendererstrasse 29 • FL-9494 SCHAAN

www.sunparadise.com • info@sunparadise.com

Telefon +423 233 12 06 • Fax +423 233 12 07

SUNPARADISE Alutechnik Vertriebs GmbH

Rickenbacher Strasse 1 • D-88131 LINDAU








info-de@sunparadise.com

Telefon +49 8382 977710 • Fax +49 8382 977712

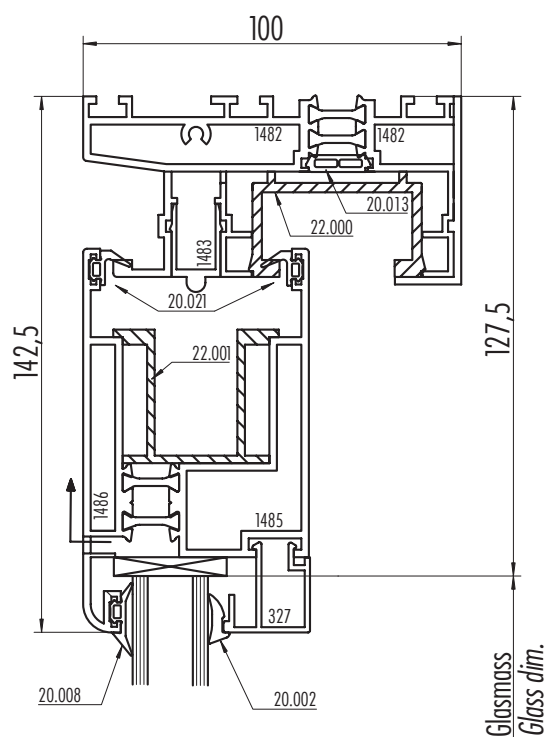
S.E.&O.

Änderungen jederzeit vorbehalten.

Subject to change without notice.

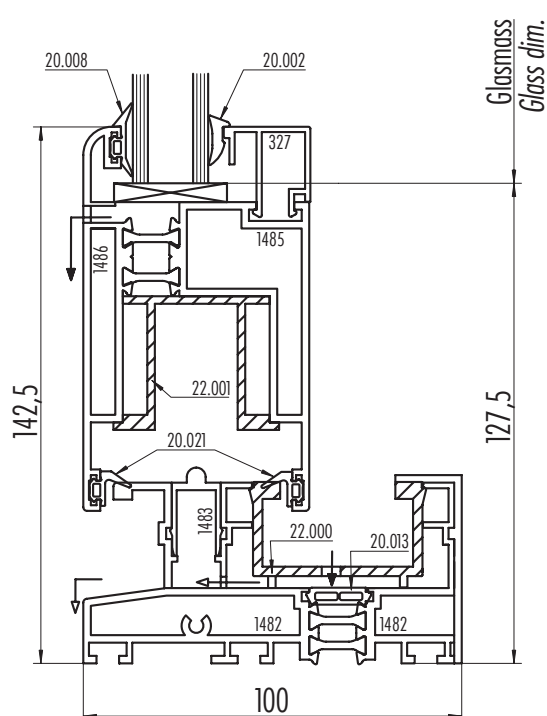
| | | |
|------------------------------------------------------------------------------------------------------------------------------------------------------------------------------------------------------------------------------------------------------|-----------------------------------------------------------------------------------------------------------------------------------------------------------------------------------------------------------------------------------------------------|-------------------------------------------------------------------------------------------------------------------------------------------------------------------------------------------------------------------------------|
|  | Hebe-Schiebewand aus thermisch getrennten Aluminiumprofilen für grossflächige Anwendungen. | <i>Lift and slide doors made from thermally broken aluminium sections, for applications requiring larger panels.</i> |
| | Ausführung Hebe-Schiebetüre in 1-, 2- oder 3-gleisiger Ausführung Äusseres Element als Standard fest verschraubt, gegen Mehrpreis auch verschiebbar möglich. | Design <i>Lift and slide door available in 1-, 2- or 3-track designs. The outermost sash is fixed, sliding option available at a surcharge.</i> |
|    | Besonderheiten Gerundete Profilkanten aussen. Seitliche Wandanschlussprofile sind flach und werden mit der Bodenschiene verschraubt. Innen und Aussen in verschiedenen Farben lieferbar. | Characteristic features <i>Rounded exterior profiles. Slim jamb profile, bolted to bottom track Inside and outside colours can be chosen separately.</i> |
| | Technische Details Durch die 180° Drehung des Handhebels heben sich die Elemente um 6mm an. Dadurch werden die Gummidichtungen entlastet und das Element kann verschoben werden. Alle Beschläge aus korrosionsbeständigen Werkstoffen. | Technical Details <i>Turning the lever by 180° will raise the sash by 6mm — the gaskets become released and the sash can be moved freely. All ironmongery parts are made of corrosion resistant materials.</i> |
|  | Verschluss Innen laufendes Element mit Handhebel und Mehrfachverschluss; auch mit Schloss und Handhebel Innen und Aussen lieferbar. Dazwischen laufendes Element mit abnehmbarem Handhebel. | Lock <i>Innermost sash fitted with lever handle and multi-point locking; also available with lock and lever handle inside and outside. In-between sash with detachable handle.</i> |
|  | Verglasung Isolierglas: 16 – 32mm Füllungen: max. 42mm | Glazing <i>Toughened Double Glazing: max. 40mm Various thermal glazing available</i> |
|  | Dimensionen Flügelbreite: max. 2500mm Elementhöhe: max. 2800mm Schienenlänge ohne Stoss: max. 6800mm Fläche pro Element: max. 6.0m ² Flügelgewicht: max. 250kg | Dimensions <i>Panel width: max. 2500mm Panel height: max. 2800mm Track length excl. baffle: max. 6800mm Area per panel: max. 4.0m² Weight per panel: max. 250kg</i> |

Deckenschiene 1-gleisig
Top rail 1-track



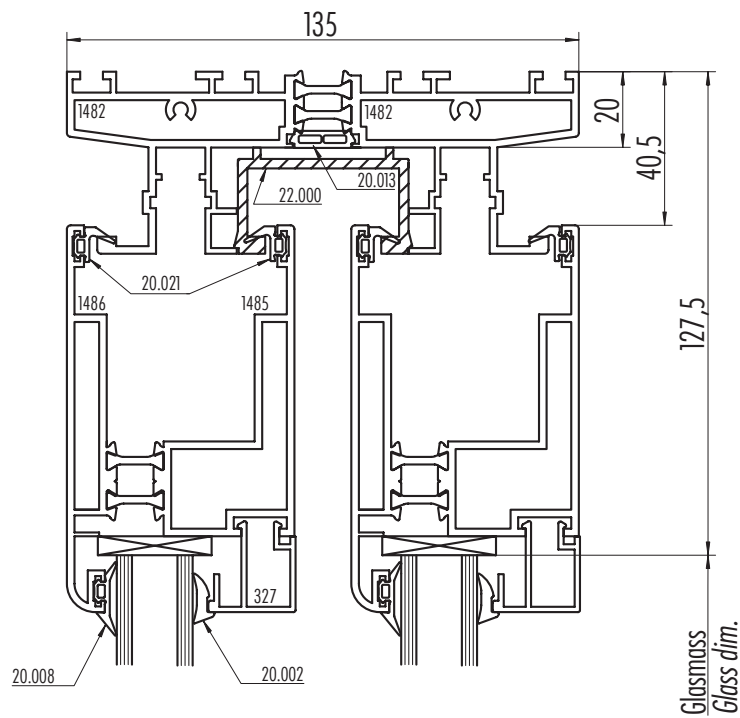
1:2
TE
01

Bodenschiene 1-gleisig
Bottom rail 1-track



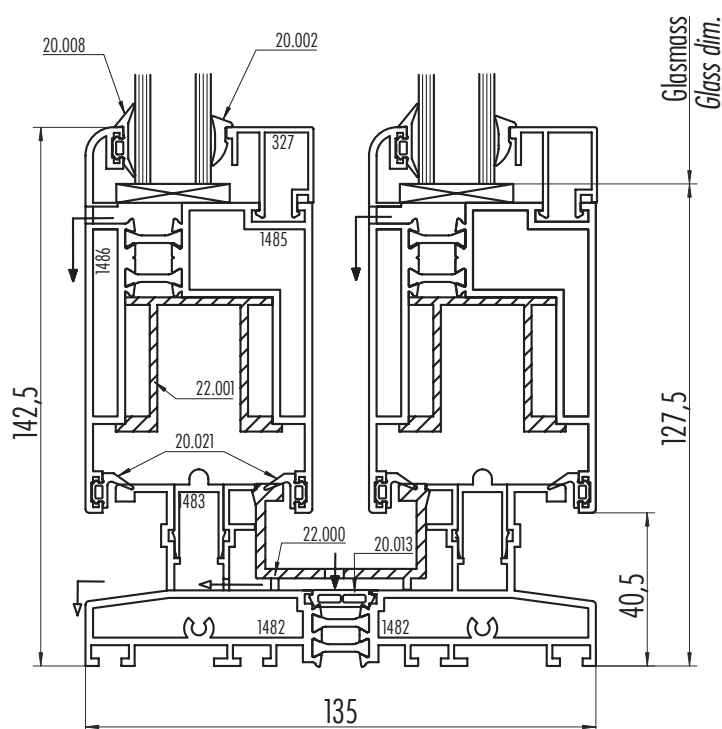
1:2
TE
02

Deckenschiene 2-gleisig
Top rail 2-track



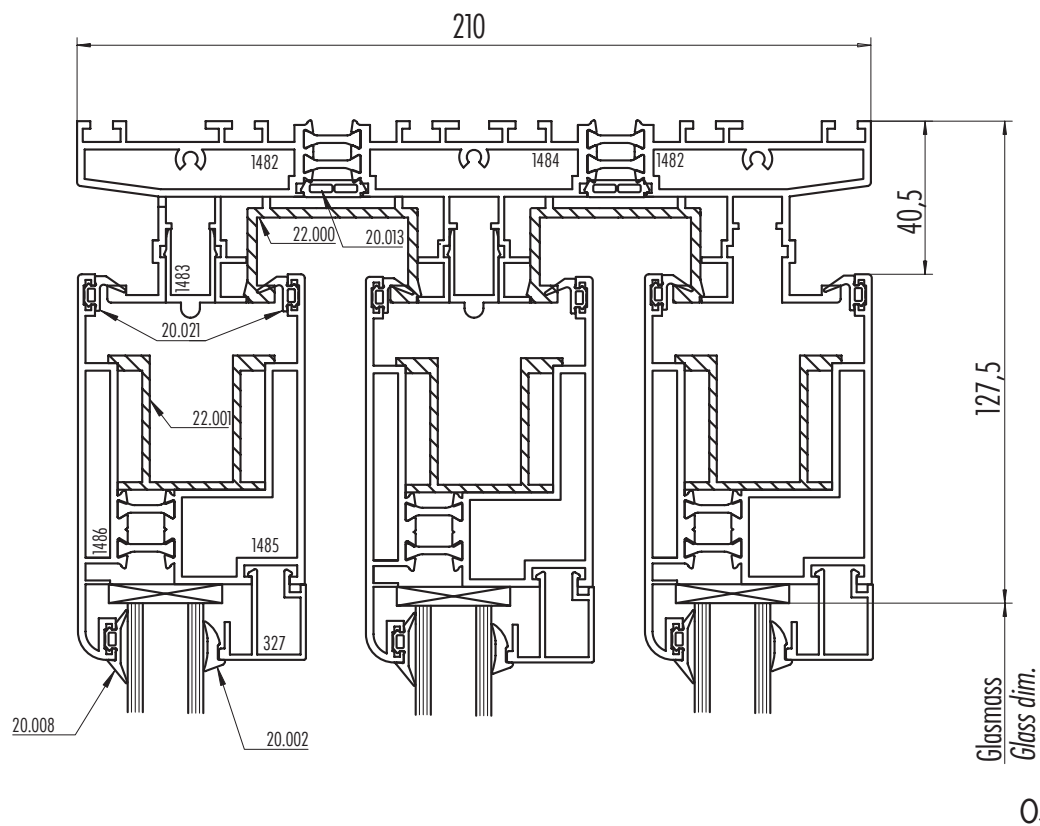
1:2
TE
03

Bodenschiene 2-gleisig
Bottom rail 2-track

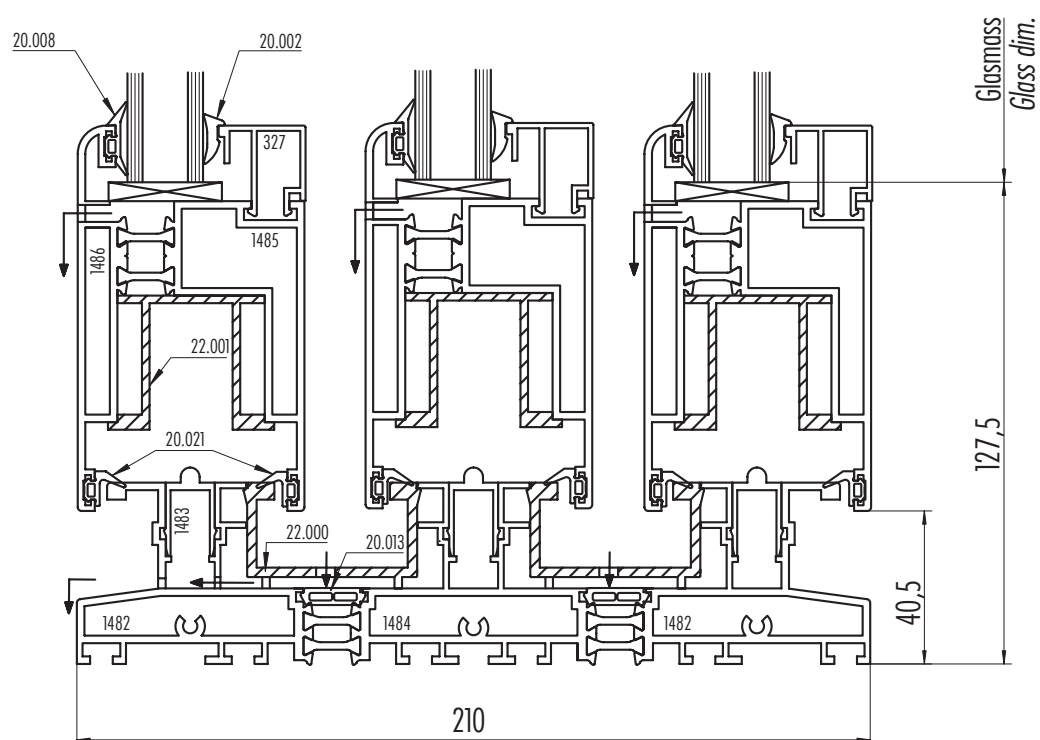


1:2
TE
04

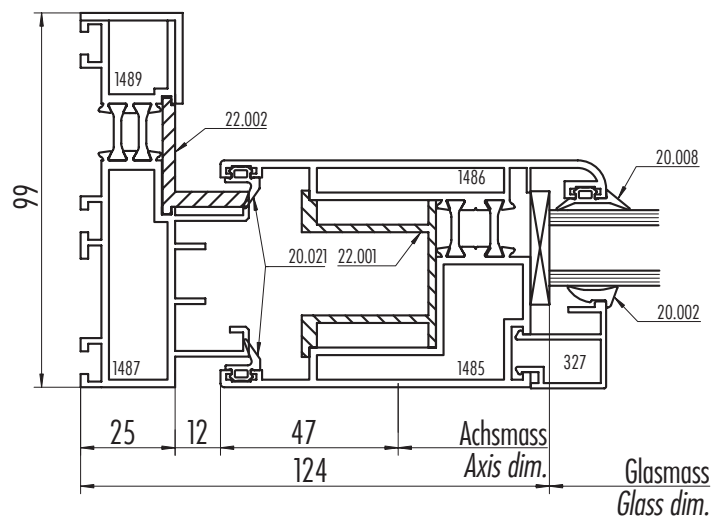
Deckenschiene 3-gleisig
Top rail 3-track



Bodenschiene 3-gleisig
Bottom rail 3-track



Wandanschluss 1-gleisig
Jamb 1-track

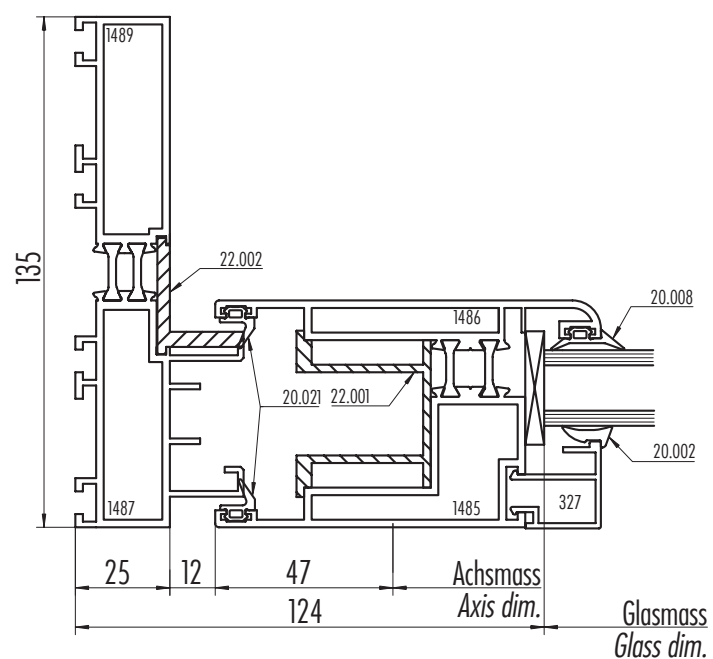


1:2

TE

07

Wandanschluss 2-gleisig
Jamb 2-track

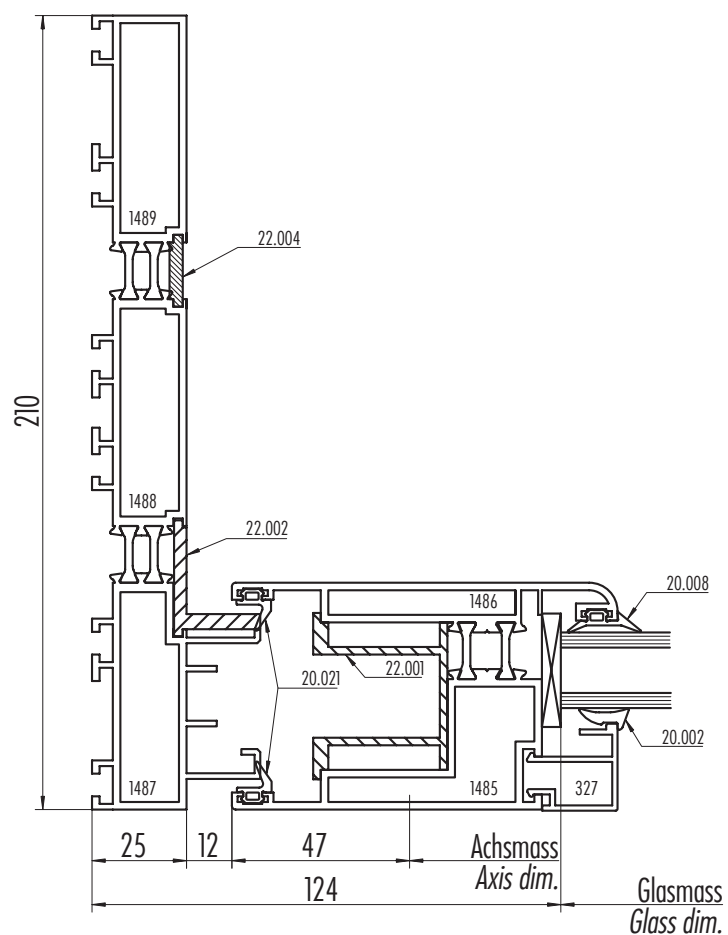


1:2

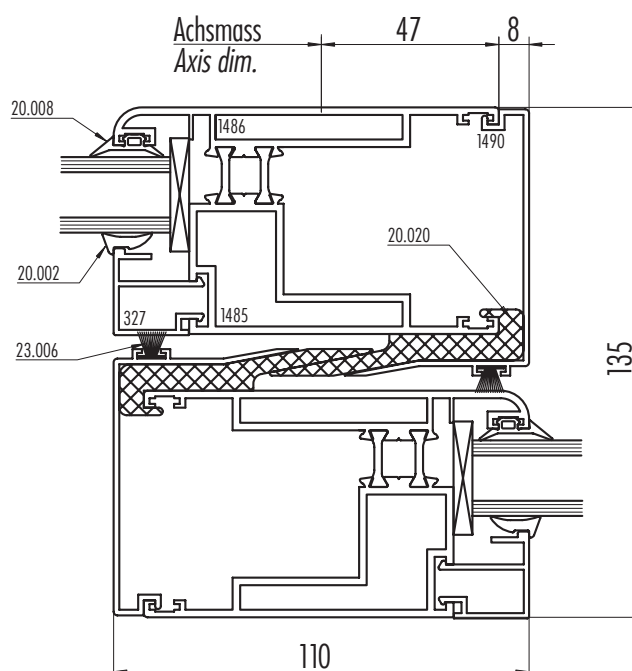
TE

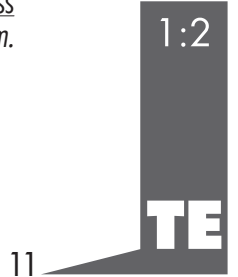
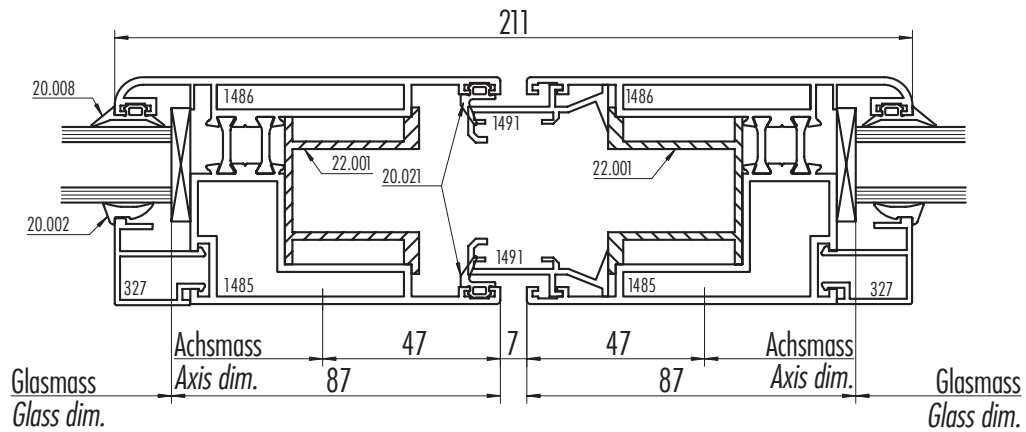
08

Wandanschluss 3-gleisig
Jamb 3-track

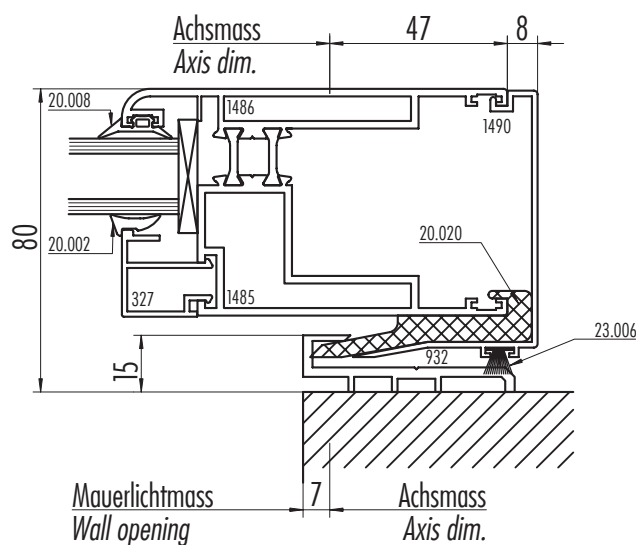


Flügelverbindung
Sash overlap

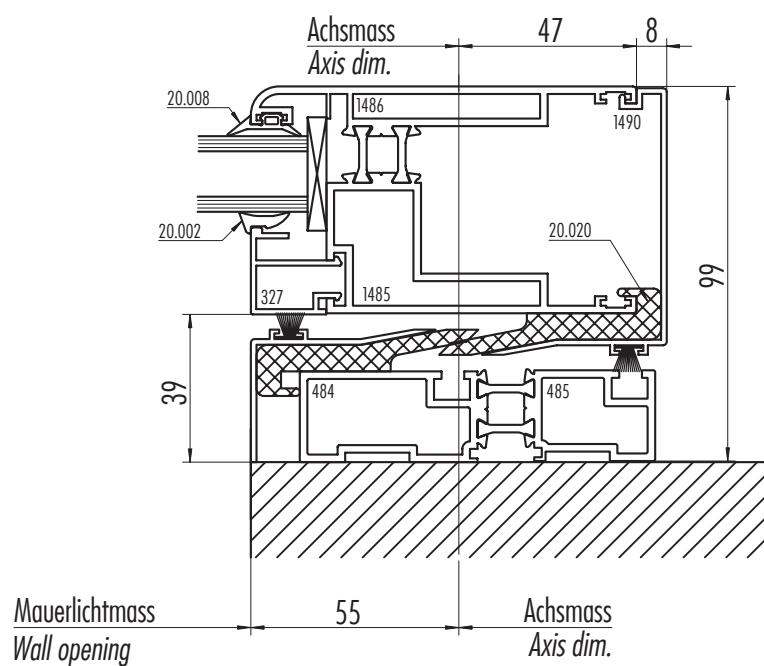




Flügelanschluss an Hausmauer
Wall connection profile



Maueranschluss 1-gleisig
Wall connection profile 1-track



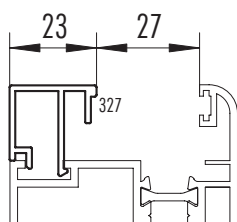
1:2

TE

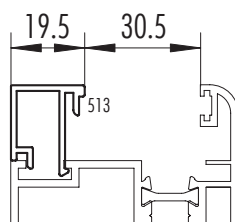
13

Glasleisten und Glasdicken Glazing beads and glass thickness

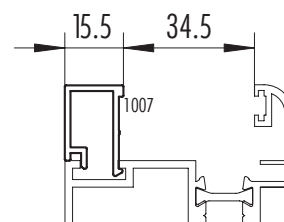
| KEILGUMMI / GASKET | | | |
|--------------------|-------------------------------|------------|-------------------------------|
| Nr. No. | Glasdicken Glass thickness | Nr. No. | Glasdicken Glass thickness |
| 20.003 | 18 – 19mm | 20.002 | 20 – 21mm |



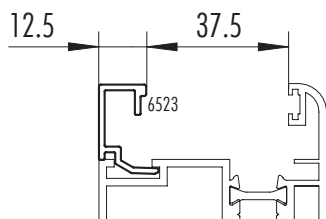
| KEILGUMMI / GASKET | | | |
|--------------------|-------------------------------|------------|-------------------------------|
| Nr. No. | Glasdicken Glass thickness | Nr. No. | Glasdicken Glass thickness |
| 20.003 | 22 – 23mm | 20.002 | 24 – 25mm |
| 20.001 | 26mm | | |



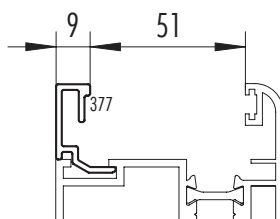
| KEILGUMMI / GASKET | | | |
|--------------------|-------------------------------|------------|-------------------------------|
| Nr. No. | Glasdicken Glass thickness | Nr. No. | Glasdicken Glass thickness |
| 20.003 | 27mm | 20.002 | 28mm |
| 20.001 | 29mm | | |



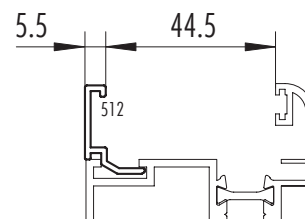
| KEILGUMMI / GASKET | | | |
|--------------------|-------------------------------|------------|-------------------------------|
| Nr. No. | Glasdicken Glass thickness | Nr. No. | Glasdicken Glass thickness |
| 20.003 | 30mm | 20.002 | 31 – 32mm |



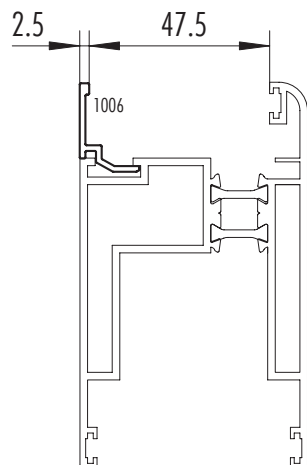
| KEILGUMMI / GASKET | | | |
|--------------------|-------------------------------|------------|-------------------------------|
| Nr. No. | Glasdicken Glass thickness | Nr. No. | Glasdicken Glass thickness |
| 20.002 | 33 – 35mm | 20.001 | 36mm |



| KEILGUMMI / GASKET | | | |
|--------------------|-------------------------------|------------|-------------------------------|
| Nr. No. | Glasdicken Glass thickness | Nr. No. | Glasdicken Glass thickness |
| 20.002 | 37 – 38mm | 20.001 | 39mm |



| KEILGUMMI / GASKET | | | |
|--------------------|-------------------------------|------------|-------------------------------|
| Nr. No. | Glasdicken Glass thickness | Nr. No. | Glasdicken Glass thickness |
| 20.002 | 40 – 41mm | 20.001 | 42mm |



Customer

Reference

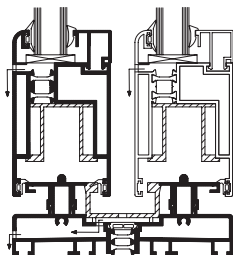
Delivery WK No. [min 4 weeks]

Place/Date

Number of enclosures (Plan/Sketch):

Signature

Details



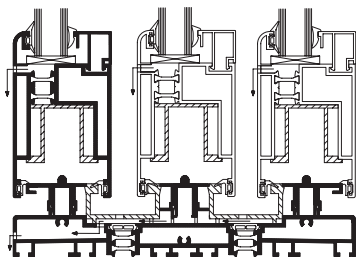
fix Outside

☐ Type 2L

Outside fix

Type 2R ☐

fix Outside fix

☐ Type 2L+2R First-opening: ☐ Left ☐ Right


fix Outside

☐ Type 3L

Outside fix

Type 3R ☐

fix Outside fix

☐ Type 3L+3R First-opening: ☐ Left ☐ Right

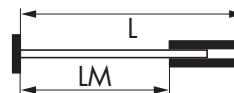
Rail extensions

☐ Wall outside

☐ Wall inside

or ☐ 1-track


Structural opening LM(mm)



Total length L(mm)

☐ Wall outside

☐ Wall inside

Frame dimensions

Width(mm)

No. of panels

Height(mm)

Transom height [top] (mm)

Locking bolt height from u/s floor guide

☐ Standard: 1050mm

☐ 450mm

Alu-frame

Inside

☐ Natur. anod.

☐ RAL 9010

☐ Other Colour

Outside

☐ Natur. anod.

☐ RAL 9010

☐ Other Colour

Glazing

☐ With

☐ Without

☐ double glazed 24mm

☐ prepared for (mm)

Lock

☐ Left

☐ Right

☐ Profile cylinder lock recess 17mm

Fixed element also slides

☐ Left hand panel

☐ Right hand panel

Recess handle outside

☐ Left

☐ Right

Ironmongery

Inside

☐ Black

☐ White

☐ Aluminium col.

Outside

☐ Black

☐ White

☐ Aluminium col.

EPDM/TPV

Inside

☐ Black

☐ White

☐ Grey

Gaskets

Outside

☐ Black

☐ White

☐ Grey

☐ silicone-free

Remark

FORM_BA_60



05-2008

Kunde

Komm.

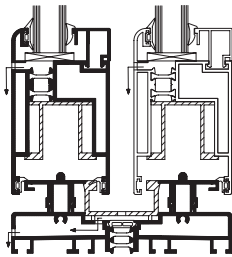
Termin KW [min. 4 Wochen]

Ort/Datum

Anzahl Beilagen (Plan/Skizze):

Unterschrift

Details



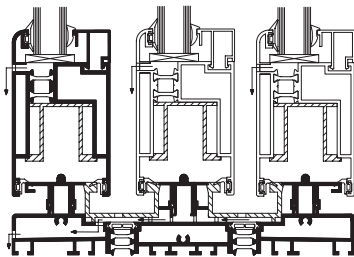
fest Aussen

☐ Typ 2L

Aussen fest

☐ Typ 2R

fest Aussen fest

☐ Typ 2L+2R Erstöffnend: ☐ Links ☐ Rechts


fest Aussen

☐ Typ 3L

Aussen fest

☐ Typ 3R

fest Aussen fest

☐ Typ 3L+3R Erstöffnend: ☐ Links ☐ Rechts

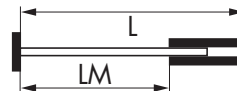
Schienenverlängerung

☐ Mauer Aussen

☐ Mauer Innen

oder ☐ 1-Gleisig

Lichtmass LM(mm) _____


☐ Mauer Aussen

☐ Mauer Innen

Totallänge L(mm) _____

Hebe-Schiebewand

Breite(mm) _____

Höhe(mm) _____ Sprossenhöhe – o.k. Sprosse(mm) _____

Verschlussriegelhöhe ab u.k. Bodenführung

☐ Standard: 1050mm

☐ 450mm

Aluprofile

Innen

☐ natur elox.

☐ RAL 9010

☐ andere Farbe _____

Aussen

☐ natur elox.

☐ RAL 9010

☐ andere Farbe _____

Verglasung

☐ Mit

☐ Ohne

☐ Isolierglas – Dicke 24mm

☐ hergerichtet für(mm) _____

Schloss

☐ Links

☐ Rechts

☐ Rundzylinderausschnitt 22mm

☐ Profilzylinderausschnitt 17mm

Festelement auch schiebbar

☐ Links

☐ Rechts

Muschelgriff Aussen

☐ Links

☐ Rechts

Beschläge

Innen

☐ Schwarz

☐ Weiss

☐ Alu-farbig

Aussen

☐ Schwarz

☐ Weiss

☐ Alu-farbig

EPDM/TPV

Innen

☐ Schwarz

☐ Weiss

☐ Grau

Dichtung

Aussen

☐ Schwarz

☐ Weiss

☐ Grau

☐ silikonfrei

Bemerkung